



MF-1040 Portable Air Compressor Owner's Manual




PLEASE READ THIS MANUAL CAREFULLY BEFORE OPERATING YOUR COMPRESSOR. SAVE THESE INSTRUCTIONS FOR FUTURE REFERENCE

BEFORE OPERATING THE UNIT, IF YOU HAVE ANY QUESTIONS, PLEASE CONTACT US

ONLY YOU CAN PREVENT INJURIES

MasterFlowAir.com

DESCRIPTION: This inflator is designed to inflate truck, car, trailer, ATV and bike tires. It will also work well for sport balls, beach toys and other inflatables. Do not use for any purpose other than inflating. If used for unintended purposes bodily harm or injury can occur. Not intended for commercial use.

 **SPECIFICATIONS:** Voltage Requirement: DC 12V – For use with a 12-Volt DC electrical system. High altitude and certain air temperatures can negatively affect the unit's performance

The following warnings indicate a potential hazardous situation that could result in death or serious injury.

READ ALL INSTRUCTIONS before operating product. Failure to follow all instructions below may result in electrical shock, fire and serious injury or death.

SAFETY GLASSES: Always wear ANSI Z87.1 approved safety glasses with side shields when operating unit. Compressed air and particulate matter can cause eye and soft tissue damage. Keep air stream away from skin and eyes.

RISK OF BURNS: Always wear gloves. Some exposed parts may become hot during use.

RISK TO BREATHING: This compressor is not designed for and should never be used as a source of breathable air. The air stream may contain carbon monoxide, toxic vapors or solid particles. Breathing these contaminants can cause serious injury or death.

RISK OF ELECTRICAL SHOCK: This compressor is for use in dry conditions only.

RISK OF FALLING: This compressor will produce vibrations and can "walk". Only operate dry level ground.

RISK OF FIRE: This unit will become hot during operation. Allow to cool before storing. NEVER operate the unit in an explosive atmosphere or near combustible material. An explosion or fire could result causing severe bodily harm or even death.

RISK OF BURSTING: Use only accessories rated for 120 psi. Always follow the manufacturer's recommended inflation instructions for your item.

DO NOT MODIFY: Never drill, modify or attempt to repair the unit. There are no user serviceable parts inside.

SAFE HANDLING: Never carry the unit by the hose or power cord. Wash hands after use.

PAY ATTENTION: Do not leave the unit running unattended.

SECURE THE LOCATION: Only operate this unit with the vehicle in a level, dry location, well off the roadway and safe from traffic. Be sure to stay out of the travel lane.

SECURE THE VEHICLE from moving. Always apply the parking brake and put car into "Park" position. Be aware that even on level ground as you inflate a tire you could cause the vehicle to rollaway. It is recommended that you curb and block the tires as an extra safety precaution against rollaway incidents.

FOR BEST PERFORMANCE: It is recommended that you operate this unit with your vehicle's engine running, outdoors and in a well-ventilated area. NEVER run your engine indoors, in confined spaces or in unventilated areas. Injury from carbon monoxide poisoning and death can occur.

CARBON MONOXIDE: Gas is a deadly, colorless, odorless, poisonous gas produced by gas and diesel engines which can kill you!

PROPER INFLATION: It is recommended that you always use a second pressure gauge to verify the actual pressure inside the tires. Set tires to the vehicle manufacturer's recommended tire pressure. If you are unsure, contact the manufacturer.

LEAD ACID BATTERY PRECAUTIONS AND SAFETY: Never smoke or allow a spark or flame in the vicinity of the battery or engine. Batteries generate explosive gases!

Wear complete eye protection and clothing protection when working with lead-acid batteries.

Make sure someone is within range of your voice or close enough to come to your aid when you work with or near a lead-acid battery.

Have plenty of fresh water and soap nearby for use if battery acid contacts skin, clothing, or eyes. If battery acid contacts skin or clothing, wash immediately with soap and water.

Avoid touching your eyes while working with a battery. Acid particles (corrosion) may get into your eyes! If acid enters your eye, immediately flood eye with running cold water for at least 10 minutes. Get medical attention immediately.

Remove all personal metal items such as rings, bracelets, necklaces, and watches when working with a lead-acid battery. A lead-acid battery can produce a short circuit current high enough to weld a ring (or the like) to metal, causing a severe burn.

Take care not to drop a metal tool or other metal onto the battery. Metal may cause sparking or short circuit the battery or another electrical device. Sparking may cause an explosion.

NOTICE: Notice indicates important information that if not followed may cause damage to the equipment.

FREE FLOW OF AIR: This unit is designed to supply a continuous flow of air. Never dead end the hose or use an accessory that stops the free flow of air. Damage to the unit can occur.

SMALL ITEMS: Will inflate quickly and can easily be damaged. Pay special attention to bicycle tires. They inflate very fast and can rupture. Be prepared to stop the unit quickly when manufacturer's recommended inflation pressure is reached.

TURN OFF: All accessories and radios. Unplug any cigarette-lighter accessories such as cell phones, radar detectors, etc. As a voltage spike through the electrical system can damage these gadgets.

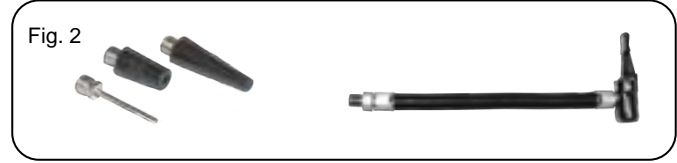
OPERATING TIME: For best results it is recommended that you use with an on/off cycle time of 10 minutes, rest/off for every 10 minutes of run time.

ACCESSORIES: The accessories provided with this unit are the only items for use with this tool. See Fig. 2 below.

**Sport Ball Needle: Always moisten the inflation needle before you insert it into the valve. Preferably, use some silicon oil to moisten the needle. Some people use spit...that's gross.*

**Small and Large Extension Adapter: For inflating pool toys, rafts, beach balls and other items that have manual inflation valves.*

**Air Chuck extension: For converting the EZ twist inflator end to a universal lever end. Not included with all models. Can be purchased at: MasterFlowAir.com*



Operating Instructions:

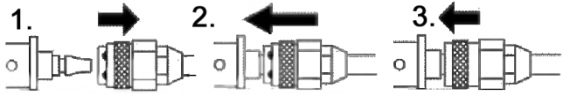
First stop and look around. Make sure you're safe; don't get killed by passing traffic.

This unit can be operated with the engine on or off. Typically with the engine running the charging system will provide slightly more voltage to the unit thereby increasing the unit's performance. Performance will vary with the battery's state of charge. Actual operating time available with the engine off will vary depending on your battery's size, age, temperature and state of charge.

Unpack the unit and completely un-wrap the power cord and inspect for damage. Place the unit on a dry, level surface.

Connect the air supply hose to the unit using the quick connect fitting as shown below.

1. Slide the retaining snap ring back.
2. Slide the fittings together firmly.
3. While holding fittings together firmly slide the outer ring forward to lock. See image below.



⚠ WARNING

This compressor is designed to operate from a 12-Volt, 20 Amp cigarette lighter style receptacle. It is recommended that you **CONSULT YOUR OWNERS MANUAL FOR VEHICLE POWER OUTLETS AMPERAGE RATING.**

With the power cord completely unwrapped and plug in hand. Inspect your cigarette lighter or power point receptacle for coins or other debris. Tobacco ash can build up in cigarette lighter sockets, preventing contact.

If all is clear, insert the plug into the receptacle. Be sure the power plug is seated securely in the socket. Poor connection inside the socket can cause overheating and damage the power plug or blow the fuse

Test the connections by switching the compressor to "on" and air will begin to flow.

Connect the EZ twist adapter to your tire valve or one of the accessories provided. The treads on your tire valves are delicate make sure they are clean and don't use tools to tighten the inflator end.

Switch the unit "On" to begin inflating. Switching the unit off to observe the gauge will provide the most accurate pressure reading. For greater accuracy we recommend using a second gauge closely calibrated to your target inflation pressure.

Do not leave the hose exposed to sunshine for long periods of time (put away your tools) or use in extreme cold conditions. Both can make the hose brittle. Don't expose the hose to hot surfaces like the exhaust pipe or the compresses cylinder head.

After use allow the unit to cool, remove the hose and pack in the carry bag. Repack in the original box to prevent damage during storage. Keep the unit a dry location.

Troubleshooting:

- Check your connections:

Some vehicles must have the ignition switched to the "On" or "Accessory" position to use the power point or cigarette lighter.

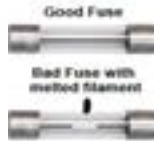
Inspect your cigarette lighter or power point receptacle for coins or other debris and test with a separate device. Tobacco ash can build up in cigarette lighter sockets, preventing contact. Check the vehicle fuse and replace if necessary.

- If the unit stops during operation:

Be sure the power plug is seated securely in the socket. Pulling on the cord can loosen the connection. Poor connection inside the socket can cause overheating and damage the power plug or blow the fuse. Inspect the fuse located in the end of the power supply plug. Replace if necessary.

- *Inspect the fuse:*

Located inside the end of the cigarette lighter you will find a 12-Volt 20 Amp glass automotive fuse. A good fuse has a thin wire filament inside the glass tube connecting both metal caps. When the fuse blows that wire can melt anywhere between the caps. Inspect the filament for damage. Replace if necessary.



- Air leaking from EZ twist inflator:

Inspect the end of the inflator for dirt and check your valve stem for damage. Also check that the rubber seal inside the inflator end is not damaged.



*This is how your inflator end should look.
Note the rubber seal around the air slot.*

California's Proposition 65

WARNING: This product contains chemicals known to the State of California to cause cancer and birth defects or other reproductive harm. This product and its components should not come in contact with food or drinking water. Please wash your hands with soap and water after touching this product or its components. For complete information regarding Proposition 65 please visit the following CA.gov site.

<http://oehha.ca.gov/prop65/background/p65plain.html>

Limited Warranty:

This portable High Volume Air Compressor is warranted by Q Industries, Inc., to be free of defects in materials and workmanship for a period of 2 years from date of original purchase.

This warranty does not cover units damaged by abuse or operated above recommended pressures. There is no other warranty, hereunder, either expressed or implied. In the event of a defect, the air compressor will be repaired or replaced at our option. Please contact Q Industries, Inc. by email or telephone to obtain a return authorization number and a shipping address. Q Industries, Inc. shall not be responsible for any other incidental, contingent, or consequential charges or damages. This warranty gives you specific legal rights, and you may also have other rights which vary from State to State. Some States do not allow limitations on how long an implied warranty lasts or the above limitations or exclusions may not apply to you.

Service:

In the event you do have a problem we're here to help. We pride ourselves on customer service and will do our best to help you.

Do Not return this product to the store. Contact customer service first. They are available M-F 9 to 5 Arizona time, which is like California except in the winter when we're an hour earlier.

The fastest way is to contact us via Email. No web? Don't worry. Phone, Fax or Mail us. If you choose to call the line goes right to voice mail. Calls are returned by the next business day. Please remember to include your name, address and phone number. Believe it or not sometimes people forget.

You can find replacement hoses, parts and accessories at:

www.Masterflowair.com

E Mail: Customerservice@qindustries.net

Warranty registration: Masterflowair.com/warranty-registration/

Phone: 954-689-2263

Fax: 303-568-7700

Mailing Address: Paper mail only please.

This corporate address cannot accept packages, only paper mail. **Do not ship items** for service to this address. Contact customer service for the return shipping address.

Q Industries Inc.
4727 E Bell Road
Suite 45-202
Phoenix AZ. 85032



MasterFlowAir.com